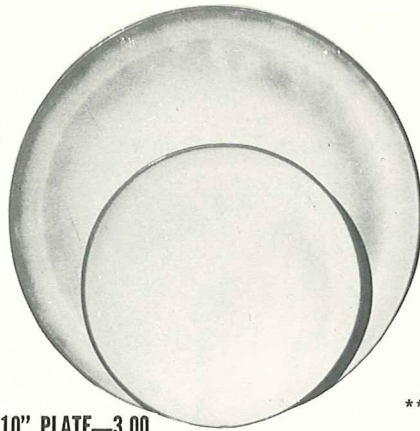


\*4K—BUTTER DISH—3.50



6F—10" PLATE—3.00

6G—7" PLATE—1.50



\*6V—2 1/2 QT. BAKER—7.00



\*6VS—1 1/2 QT. BAKER—5.50



\*5LC—6 OZ. JUICE—1.50



\*5L—12 OZ. TUMBLER—2.00



\*6T—6 CUP TEAPOT—5.00



\*6B—SUGAR WITH LID—2.50

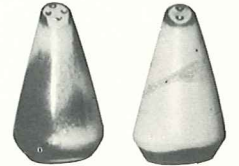


\*\*6C—CUP—2.00

6E—5" WELLED SAUCER—1.25



\*6A—9 OZ. CREAMER—2.00



\*6H—SALT & PEPPER—2.50



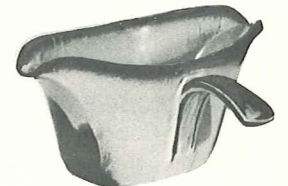
\*81—1 QT. PITCHER—3.50



\*80—2 QT. PITCHER—5.00



\*6J—2 CUP TEAPOT—3.50



\*6S—TWO SPOUT GRAVY—3.50



\*6U—18 OZ. BAKER FOR TWO—3.50  
A COVERED CANDY DISH



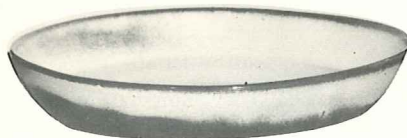
5QS—13" STEAK PLATE (SHALLOW PLATTER)—3.00

\*6P—11" STEAK PLATE—2.50

\*5PS—9" TRAY—2.00



\*BP—6 OZ. BEAN POT  
OR CUSTARD—1.00



\*91—10" BAKING DISH—3.00

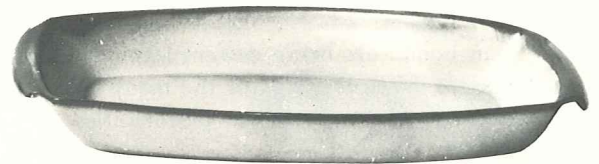


\*6N—1 QT. BOWL—2.50



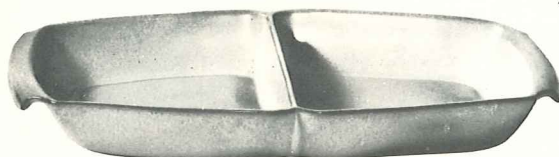
\*\*6X—14 OZ. CHILI SOUP—1.50

\*\*6XS—10 OZ. FRUIT—1.25

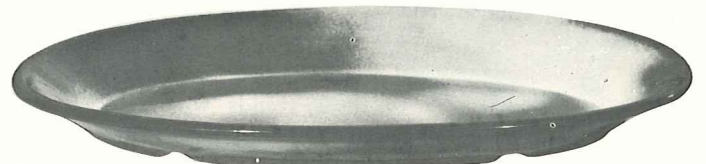


5P—17" DEEP PLATTER—10.00

\*5Q—13" DEEP PLATTER—5.00



\*5QD—13" DIVIDED BOWL—5.00



\*TP—17" OVAL PLATTER—10.00

THIS PAGE AVAILABLE IN PRAIRIE GREEN, WOODLAND MOSS, AUTUMN YELLOW AND WHITE SAND EXCEPT WHERE NOTED

\*AVAILABLE IN ALL COLORS

\*\*AVAILABLE IN BLACK & FLAME ALSO. — ADD 50% FOR FLAME

SIZES ARE APPROXIMATE AND MAY VARY SLIGHTLY.